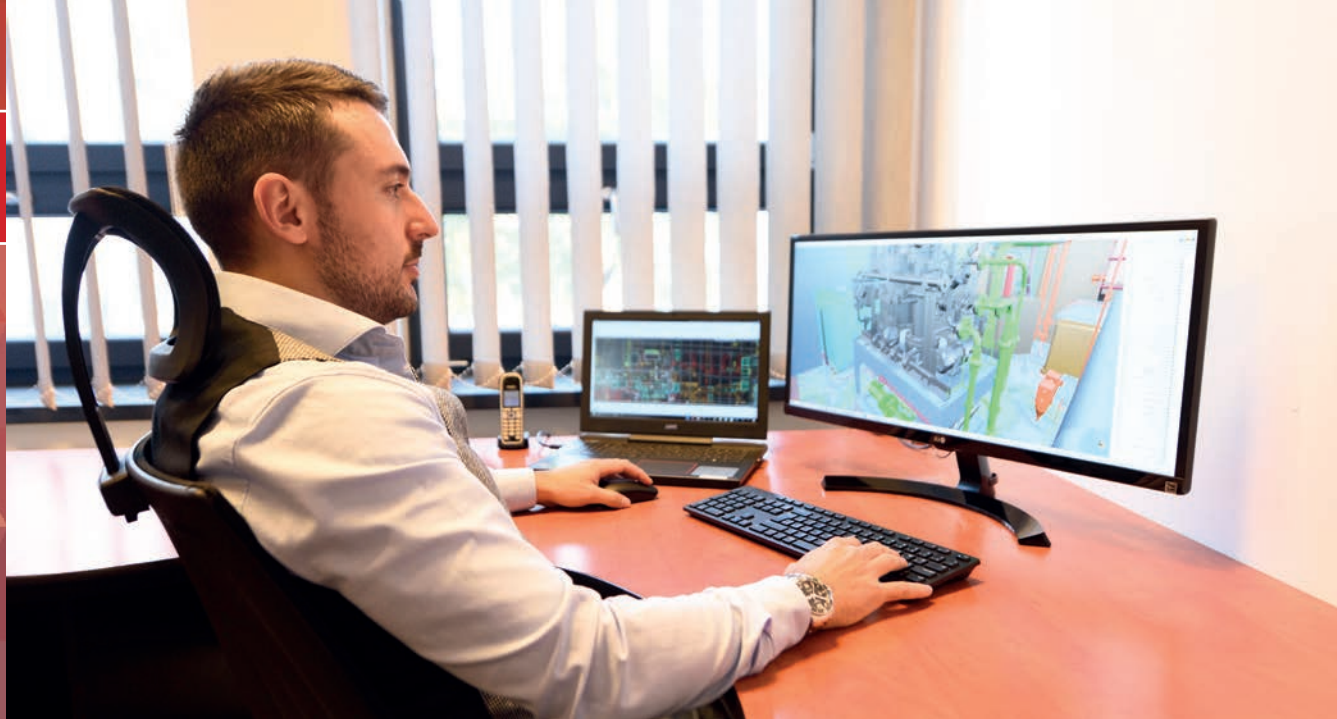




projects portfolio **iINTERCAD**



INTERCAD engineering is a multidisciplinary engineering company covering all aspects of ship design. Our team of naval architects and designers have vast experience in both basic and detail design.

As engineering partner we are capable of designing complete projects from the first lines until the approval of the complete design by the concerned classification society. If needed we can also act as a subcontracting partner where we focus on specific parts of the work. Depending on client wishes we can work together with our client at their facilities or remotely from one of our two offices.

We have a proven track record with different clients and with many different types of vessels. Hereby we offer you a selection of just some of the projects where INTERCAD was involved with the design.



ULSTEIN SX148

INSPECTION MAINTENANCE & REPAIR (IMR) VESSEL



MAIN CHARACTERISTICS

Length overall	106.5 m
Length between p.p	101.9 m
Breadth	24.5 m
Depth to main deck	11,5 m
Draught max.	8.0 m
Design draught	6.5 m
Trial speed	17 knots
Service speed, fully mobilized	16 knots
Main generators	2x 4320 ekW + 2x 1825 ekW
Deadweight approx	5125 t
Accommodation	90 persons

Classification

DNV 1A1, Well Stimulation Vessel, SF, E0,
DYNPOS-AUTR, NAUT-AW, CLEAN DESIGN,
COMF-V(3)(80%), COMF-C(3), LFL *, ICE-C,
DEICE, HELDK-SH (CAA-N)
Code of safety for Special Purpose Ships
(SPS) ; Flag: NOR

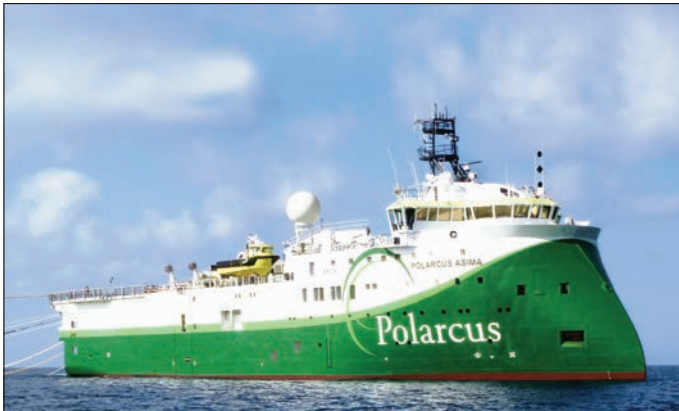
INTERCAD IS SUPPLYING

- Basic design – DNV classification
- Detailed engineering of hull construction
- Detailed engineering steel-outfitting.

ULSTEIN SX134

SEISMIC RESEARCH VESSEL

Polarcus Asima



MAIN CHARACTERISTICS

Length overall	92,0 m
Breadth	21,0 m
Draught max.	7,5 m
Speed	14 knots
Main engines	Wartsila 4x 9L20 & 2x 9L26
MCR rating	1800 & 2850 ekW at 1000 rpm
Gross tonnage	7894 t
Accommodation	60 persons

Classification

DNV 1A1, SF, E0, DYNPOS-AUTR,
CLEAN DESIGN, COMF-V (3), ICE-1A,
WINTERIZED BASIC, NAUT-AW,
HELDK, BWM-T, IMO code SPS-2008
Flag Bahamas

INTERCAD IS SUPPLYING

- Basic design – DNV classification (Ice class A* and SPS code)
- Detailed engineering of hull construction
- Detailed engineering of piping and machinery

ULSTEIN SX124

SEISMIC RESEARCH VESSEL
WG COLUMBUS



MAIN CHARACTERISTICS

Length overall	90.5 m
Length between p.p	82.0 m
Breadth	19.0 m
Depth to main deck	8.0 m
Draught max.	6.6 m
Speed	15 knots
Main generators	6x 1710 ekW
Bollard pull	100 t
Deadweight approx	3560 t
Gross tonnage	5900 t
Accommodation	69 persons

Classification

DNV 1A1, E0, DYNPOS-AUTR, CLEAN DESIGN,
COMF-V(3), ICE-C, NAUT-AW, HELDK

INTERCAD IS SUPPLYING

- Basic design – DNV classification
- Detailed engineering of hull construction
- Detailed engineering steel-outfitting
- Detailed engineering pipe and machinery

ULSTEIN SX124

SEISMIC RESEARCH VESSEL

Polarcus Naila & Polarcus Nadia



MAIN CHARACTERISTICS

Length overall	88.8 m
Breadth	19.0 m
Draught max.	6.6 m
Speed	14 knots
Main engines	6x Wartsila 9L20
MCR rating	1 800 kW at 1000 rpm
Bollard pull	100 t
Gross tonnage	6970 t
Accommodation	69 persons

Classification

DNV 1A1, SF, E0, DYNPOS-AUTR,
CLEAN DESIGN, COMF-V (3), ICE-C,
NAUT-AW, HELDK

INTERCAD IS SUPPLYING

- Basic design – DNV classification
- Detailed engineering of hull construction
- Detailed engineering steel-outfitting
- Detailed engineering pipe and machinery

ULSTEIN SX134

SEISMIC RESEARCH VESSEL

Polarcus Amani



MAIN CHARACTERISTICS

Length overall	92,0 m
Length between p.p	84,96 m
Breadth	21,0 m
Depth to main deck	9,0 m
Draught max.	7,5 m
Design draught	6.5 m
Max speed	17 knots
Deadweight approx	4472 t
Gross tonnage	7709 GRT
Accommodation	60 persons

Classification and Flags

Det Norske Veritas 1A1, E0,
DYNPOS-AUTR, CLEAN DESIGN,
COMF-V(3), ICE-1A*, WINTERIZED
BASIC, NAUT-AW, HELDK, BWMT,
TMON, SPS.

Flag: BAHAMAS

INTERCAD IS SUPPLYING

- Basic design – DNV classification
- Detailed engineering of hull construction
- Detailed engineering steel-outfitting

WÄRTSILÄ VS4411

LNG POWERED PLATFORM SUPPLY VESSEL



MAIN CHARACTERISTICS

Length overall	89,2 m
Length between p.p	80,4 m
Breadth	19,0 m
Depth to 1st deck	9,0 m
Speed approx.	14,8 knots
Max. deadweight	5500 t
Accommodation	25 persons

Classification

DnV, 1A1, Offshore Service Vessel +, Supply, SF, DYNPOS-AUTR, E0, GAS FUELLED, BIS, CLEAN DESIGN, COAT PSPC (B), COMF-V(3) & C(3), LFL*, NAUT OSV(A), DK (10t/m²) and HL (2.8), Oilrec, Stand-by Vessel (S), Fire Fighter II.

INTERCAD IS SUPPLYING

- Detail design of hull construction
- Detail design of steel outfitting

ULSTEIN PX121

PLATFORM SUPPLY VESSEL
BLUE FIGHTER



MAIN CHARACTERISTICS

Length overall	83,4 m
Length between p.p	76,5 m
Breadth	18,0 m
Depth to main deck	8,0 m
Draught max.	6,7 m
Speed approx.	15 Knots
Main generators	2x 2250 ekW + 2x 940 ekW
Gross tonnage	3644 GRT
Deadweight	4242 t
Accommodation	24 persons

Classification and Flags

DnV 1A1, Offshore Service Vessel Supply, SF,
E0, DYNPOS-AUTR, CLEAN DESIGN, COMFV(3),
COMF-C(3), LFL*, NAUT-OSV(A),
DK(+), HL(+)
Flag: NOR

INTERCAD IS SUPPLYING

- Basic design – DNV classification
- Detailed engineering of hull construction
- Detailed engineering steel-outfitting
- Detailed engineering of piping and machinery

ULSTEIN PX105

PLATFORM SUPPLY VESSEL
BOURBON MISTRAL



MAIN CHARACTERISTICS

Length overall	88,8 m
Length between p.p	82,0 m
Breadth	19,0 m
Draught max.	6,6 m
Depth to main deck	8,0 m
Speed approx.	15,5 knots
Deadweight	4779 t
Accommodation	23 persons crew 250 rescued person

Classification and Flag

DnV 1A1, SF, E0, DynPos AUTR, CLEAN DESIGN, COMF-V(3), LFL *, ICE C, DK(+), HL(+), NAUT-OSV(LOC). Standby Vessel 250 persons acc. to NMD regulation
Flag: NOR
NLS Certificate

INTERCAD IS SUPPLYING

- Basic design – DNV classification
- Detailed engineering of hull construction
- Detailed engineering of piping and machinery
- Detailed engineering of steel outfitting

ULSTEIN P801

OFFSHORE SUPPLY & RECOVERY VESSEL



MAIN CHARACTERISTICS

Length overall	56,8 m
Length between p.p	53,1 m
Breadth	4,0 m
Depth to main deck	6,0 m
Draught max.	4,8 m
Design draught	4,7 m
Speed approx.	2,2 knots
Main generators	1x 1700 eKW + 2x 1550 eKW
Deadweight approx.	1300 t
Deck load	500 t
Cargo deck area	360 m ²
Accommodation	25 persons

Classification

BV HULL, MACH, Supply vessel - oil product,
Fire-fighting, Oil recovery ship, Unrestricted
navigation, DYNAPOS AM, AUT-UMS,
CLEANSHIP, SDS

INTERCAD IS SUPPLYING

- Basic design – DNV classification
- Detailed engineering of hull construction
- Detailed engineering of steel-outfitting
- Detailed engineering of machinery & piping
- Detailed engineering of piping and machinery

ULSTEIN SX123

STANDBY RESCUE VESSEL
ESVAGT AURORA



MAIN CHARACTERISTICS

Length overall	80,0 m
Length between p.p	74,7 m
Breadth	17,0 m
Depth to main deck	7,5 m
Draught max.	6,0 m
Speed approx.	18-19 knots
Main engines	2x 4000 kW
Gross tonnage	3680 t
Accommodation	32 persons

Classification and Flag

DNV1A1, Tug, Standby Vessel, SF, E0, TMON,
BIS, Fire Fighter I, OILREC, DYNPOS-AUTR, CLEAN
DESIGN, COMF-V(3), NAUT-OSV(A),
HL(+)

INTERCAD IS SUPPLYING

- Basic design – DNV classification
- Detailed engineering of hull construction
- Detailed engineering of piping & machinery
- Detailed engineering of steel outfitting

ULSTEIN PX121

PLATFORM SUPPLY VESSEL
BLUE PROSPER



MAIN CHARACTERISTICS

Length overall	83,4 m
Length between p.p	76,5 m
Breadth	18,0 m
Depth to main deck	8,0 m
Draught max.	6,7 m
Speed approx.	15 Knots
Main generators	2x 2250 ekW + 2x 940 ekW
Gross tonnage	3644 GRT
Deadweight	4242 t
Accommodation	24 persons

Classification and Flags

DnV 1A1, Offshore Service Vessel Supply,
SF, E0, DYNPOS-AUTR, CLEAN DESIGN, COMF-
V(3), COMF-C(3), LFL*, NAUT-OSV(A),
DK(+), HL(+)
Flag: NOR

INTERCAD IS SUPPLYING

- Basic design – DNV classification

ULSTEIN P101

MULTIFUNCTIONAL PLATFORM SUPPLY VESSEL ISLAND PIONEER



MAIN CHARACTERISTICS

Length overall	95,0 m
Length between p.p	82,0 m
Breadth moulded	20,5 m
Depth to main deck	9,0 m
Draught max.	7,0 m
Main engines	4x 2480 ekW
Speed approx.	15,1 knots
Deadweight	4948 t
Accommodation	90 persons

Classification and Flags

DnV 1A1, SF, E0, DynPos AUTR, LFL*, CLEAN,
COMF-V(3), HELDK-SH, DK(+), HL(+).

Flag: NOR. NLS Certificate

INTERCAD IS SUPPLYING

- Basic design – DNV classification
- Detail design of hull construction

ULSTEIN AX104

ANCHOR HANDLE TUG SUPPLY VESSEL
BOURBON ORCA



MAIN CHARACTERISTICS

Length overall	86,2 m
Length between p.p	77,0 m
Breadth moulded	18,5 m
Depth to main deck	8,5 m
Draught max.	7,0 m
Design draught	6,0 m
Trial speed	17,1 knots
Main generators	4x 2880 bkW + 2x 1665 bkW
Deadweight approx	3180 t
Cargo deck area	540 m ²
Accommodation	35 persons

Classification and Flag

DnV 1A1, Supply Vessel SF, Tug, E0, DynPos
AUTR, CLEAN, COMF-V(3), DK(+), HL(+),
NAUT-OSV (LOC).
Flag: NOR. NLS Certificate

INTERCAD IS SUPPLYING

- Basic design – DNV classification
- Detailed engineering of hull construction
- Detailed engineering steel-outfitting.

ULSTEIN A122

ANCHOR HANDLE TUG SUPPLY VESSEL
OLYMPIC ZEUS



MAIN CHARACTERISTICS

Length overall	93,8 m
Length between p.p	82,7 m
Breadth moulded	23.0 m
Draught max.	8,0 m
Depth to main deck	10,0 m
Speed approx.	18 knots
Deadweight	4931 t
Bollard pull	260 t
Accommodation	68 persons

Classification and Flags

DnV 1A1, Tug, Supply Vessel, SF, E0, DYNPOS-AUTR, NAUT-OSV(A), CLEAN DESIGN, OPP-F, ICE C, COMF-V(3), COMF-C(3), DK(+), HL(+)
Flag: NOR

INTERCAD IS SUPPLYING

- Basic design – DNV classification
- Detailed Engineering of hull construction
- Detailed Engineering of piping and machinery

ULSTEIN SX121

OFFSHORE CONSTRUCTION & LIGHT INTERVENTION VESSEL - ISLAND CONSTRUCTOR



MAIN CHARACTERISTICS

Length overall	120,2 m
Length between p.p	112,3 m
Breadth moulded	25,0 m
Depth to main deck	10,0 m
Scantling draught	8,0 m
Design draught	7,0 m
Speed	15,3 knots
Main generators	2x 4145 kWe + 2x 2765 kWe
Deadweight without offshore crane	9100 t
Accommodation	90 persons

Classification and Flag

DnV 1A1, WELL INTERVENTION UNIT, SF, E0,
NAUT-OSV(A), DYNPOS-AUTRO, LFL*, CLEAN
DESIGN, OPP-F, CRANE, COMF-V(3), COMF-
C(3), HELDK, DK(+), HL(2,8)

Flag: NIS

INTERCAD IS SUPPLYING

- Basic design – DNV classification
- Detailed engineering of hull construction
- Detailed engineering piping and machinery
- Detailed engineering steel-outfitting

ULSTEIN SX121

OFFSHORE CONSTRUCTION VESSEL VIKING POSEIDON



MAIN CHARACTERISTICS

Length overall	130,0 m
Length between p.p	122,1 m
Breadth moulded	25,0 m
Depth to main deck	10,0 m
Scantling draught	7,8 m
Design draught	7,0 m
Speed	14,5 knots
Main generators	4x 2700 kWe + 2x 1450 kWe
Deadweight without offshore crane	10450 t
Accommodation	106 persons

Classification and Flag

DnV 1A1, SF, E0, DYNPOS-AUTRO, NAUT-OSV(A),
CLEAN, OPP-F, CRANE, COMF-V(3), COMF-C(3),
HELDK-SH, DK(+)
Flag: NOR

INTERCAD IS SUPPLYING

- Detailed engineering of hull construction
- Detailed engineering steel outfitting
- Detailed engineering of piping and machinery

ULSTEIN SX121

OFFSHORE CONSTRUCTION & LIGHT INTERVENTION VESSEL - SARAH



MAIN CHARACTERISTICS

Length overall	120,2 m
Length between p.p	112,3 m
Breadth moulded	25,0 m
Depth to main deck	10,0 m
Scantling draught	8,0 m
Design draught	7,0 m
Speed	15,0 knots
Main generators	2x 4320 kWe + 2x 2765 kWe
Deadweight without offshore crane	9100 t
Accommodation	100 persons

Classification and Flag

DnV 1A1, SF, E0, DYNPOS-AUTRO, NAUT-OSV(A), LFL*, CLEAN DESIGN, OPP-F, CRANE, COMF-V(3), COMF-C(3), HELDK, DK(+), HL(2,8)
Flag: NISANCE

INTERCAD IS SUPPLYING

- Basic design – DNV classification
- Detailed engineering of hull construction
- Detailed engineering piping and machinery
- Detailed engineering steel-outfitting.

ULSTEIN VS4204

OFFSHORE CONSTRUCTION VESSEL NORMAND INSTALLER



MAIN CHARACTERISTICS

Length overall	123,65 m
Length between p.p	110,0 m
Breadth moulded	28,0 m
Depth to 1st deck	11,0 m
Scantling draught	8,3 m
Design draught	7,0 m
Speed	16,8 knots
Main generators	2x 3840 kWe + 2x 7680 kWe
Deadweight without offshore crane	9511 t
Accommodation	100 persons

Classification

Class: Det norske Veritas 1A1, Tug, DYNPOS
AUTRO, E0, CLEAN, COMF-V(3)C(3), HELDK-SH,
SF, ICE C, CRANE, DK(+), TMON, NAUT-
OSV(LOC)
Flag: NOR., Flag: NIS

INTERCAD IS SUPPLYING

- Detail design of hull construction
- Detail design of piping and machinery

WÄRTSILÄ VS480

ANCHOR HANDLE TUG SUPPLY VESSEL
NORMAND IVAN



MAIN CHARACTERISTICS

Length overall	81,0 m
Breadth	21,0 m
Summer draft	7,37 m
Power	14720 kw
Speed	13 knots
Deadweight	4138 t
Lightship	1381 t
Gross tonnage	4604 t
Deck area aft of hangar	580 m ²
Accommodation	52 persons
Bollard pull	240 t
Delivered	2002s

Class definition

DnV+1A1,Tug/Supply Vessel,SF,EO,Ice
C,DYNPOS AUTR,DK+,HL(2,5)

INTERCAD IS SUPPLYING

- Detailed engineering of hull construction

ULSTEIN VS4204

PLATFORM SUPPLY VESSEL
VIKING DYNAMIC



MAIN CHARACTERISTICS

Length overall	90,2 m
Length b.p.p.	77,2 m
Breadth	19,0 m
Depth to main deck	8,4 m
Scantling draught	8,0 m
Design draught	7,0 m
Speed	15,3 knots
Engines	5x Cat 3516 BTA
Deadweight without offshore crane	9100 t
Accommodation	90 persons

Classification

DnV 1A1, WELL INTERVENTION UNIT, SF, E0,
NAUT-OSV(A), DYNPOS-AUTRO, LFL*, CLEAN
DESIGN, OPP-F, CRANE, COMF-V(3), COMF-C(3),
HELDK, DK(+), HL(2,8)
Flag: NIS

INTERCAD IS SUPPLYING

- Basic design – DNV classification
(Ice class A* and SPS code)
- Detailed engineering of hull construction
- Detailed engineering of piping and
machinery

ATLANTIC DAWN

GENERAL CARGO VESSEL



MAIN CHARACTERISTICS

Length overall	111,6 m
Breadth	16,8 m
Speed	17 knots
Gross tonnage	5465 t
Deadweight	approx 4200 t

Builder	SHIPKITS - GRONINGEN, NETHERLANDS
Year of build	2013

Classification BUREAU VERITAS

Flag Netherlands

INTERCAD IS SUPPLYING

- Basic design – BV classification
- Detailed engineering of hull construction
- Detailed engineering steel-outfitting

PANCALDO

HEAVY LIFT MULTI PURPOSE CARGO VESSEL



MAIN CHARACTERISTICS

Length overall	118,0 m
Breadth	19,4 m
Draft	7,15 m
Gross tonnage	6272 t
Deadweight	7072 t
Hold capacity	9600 cbm
Cranes	2x 150mt/ 300mt combi

Builder	PS WERFTEN WOLGAST - WOLGAST, GERMANY
Year of build	2000

Classification
GERMANISCHER LLOYD

Flag
ANTIGUA & BARBUDA

INTERCAD IS SUPPLYING

- Detailed engineering of hull construction

MS FINNMARKEN

PASSANGER CRUISE VESSEL



MAIN CHARACTERISTICS

Length overall	138,5 m
Breadth	21,5 m
Draught	4,8 m
Speed	15 knots
Passengers	1000
Beds	628
Car capacity	47

Gross tonnage 15690 t

Shipyard Kværner Kleven, (Norway)

Year of built 2002

INTERCAD IS SUPPLYING

- Detailed engineering of hull construction

TUI CRUISE SHIP

PASSANGER CRUISE VESSEL



MAIN CHARACTERISTICS

Length overall	294,0 m
Breadth moulded	36,0 m
Draught	8,0 m
Speed	21,0 knots
Passengers cabins	1250
Passengers	2500
Crew	1000

Builder STX Finland Oy

Delivery Spring 2014

INTERCAD IS SUPPLYING

- Basic design – machinery and piping of AC-ROOMS and Public Areas
- Detailed engineering of machinery and piping of AC-ROOMS and Public Areas
- Supply of all 3D equipment models

VIKING PRESTIGE

RIVER CRUISE VESSEL



MAIN CHARACTERISTICS

Length overall	135,0 m
Total width	11,4 m
Draught	1,6 m
Number of decks	4
Engine capacity	4 x 330 kW
Speed	21 km/h
Passangers	190
Outside cabins	95
Balcony cabins	39
Standard cabis	25
Cabis with french balconies	22
Crew	49

Built in year	2011
Buider	Neptun Werft

INTERCAD IS SUPPLYING

- Detailed engineering of hull construction
- Detailed engineering steel-outfitting.

A-ROSA BRAVA

RIVER CRUISE VESSEL



MAIN CHARACTERISTICS

Length overall	135,0 m
Total width	11,4 m
Draught	1,6 m
Number of decks	4
Engine capacity	4 x 330 kW
Speed	22 km/h
Passangers	202
Outside cabins	99
Cabins with french balcony	70

Built in year	2011
Buider	Neptun Werft

INTERCAD IS SUPPLYING

- Detailed engineering of hull construction
- Detailed engineering of piping and machinery

JONGERT 3900 MY

MOTOR YACHT
LUCILA-M



MAIN CHARACTERISTICS

Length overall	39,0 m
Length at waterline	31,8 m
Beam	7,8 m
Hull material	Aluminium
Draft	1,8 m
Displacement	185 t
Speed max.	28 knots
Engine	2x MTU 16V 4000 M90
Hourspower	7300 hp
Propulsion	Twin Screw
Guest sleeping	8
Crew	2
Cabins	2

Buider

Jongert Yachts

INTERCAD IS SUPPLYING

- Detailed engineering of hull construction

BUDAPEST Boat

LUXURY CONFERENCE VESSEL



MAIN CHARACTERISTICS

Length overall:	52,6 m
Width:	7,8 m
Draught	1,6 m
Draft:	8 m
Cavity:	2,5 l
Speed:	20,0 knots

INTERCAD IS SUPPLYING

- Revised arrangements drawings and diagrams
- Structural integrity of the vessel

MEIN SCHIFF 2

PASSANGER CRUISE VESSEL



MAIN CHARACTERISTICS

Length overall:	316 m
Breadth moulded:	36 m
Draft:	8,0 m
Speed:	22,0 knots
Propulsion: Diesel electric,	
– Two shafts with fixed pitch propellers,	
– Three bow thrusters,	
– Two stern thrusters	
Passenger cabins:	1447
Passengers:	2894
Crew:	1100

INTERCAD IS SUPPLYING

- Supply of 3D equipment models

MEIN SCHIFF 3

PASSANGER CRUISE VESSEL



MAIN CHARACTERISTICS

Length overall:	293,2 m
Breadth moulded:	35,8 m
Draft:	8,0 m
Speed:	22,0 knots
Propulsion: Diesel electric,	
– Two shafts with fixed pitch propellers,	
– Three bow thrusters,	
– Two stern thrusters	
Passenger cabins:	1250
Passengers:	2506
Crew:	1000

INTERCAD IS SUPPLYING

- Routing of machinery piping systems for Air conditioning Rooms
- Creation of coordination drawings
- Creation of isometrics

MEIN SCHIFF 4

PASSANGER CRUISE VESSEL



MAIN CHARACTERISTICS

Length overall:	293,2 m
Breadth moulded:	35,8 m
Draft:	8,0 m
Speed:	22,0 knots
Propulsion: Diesel electric,	
– Two shafts with fixed pitch propellers,	
– Three bow thrusters,	
– Two stern thrusters	
Passenger cabins:	1250
Passengers:	2506
Crew:	1000

INTERCAD IS SUPPLYING

- Routing of machinery piping systems for Air conditioning Rooms
- Creation of coordination drawings
- Creation of isometrics
- Supply of all 3D equipment model

MEIN SCHIFF 5

PASSANGER CRUISE VESSEL



MAIN CHARACTERISTICS

Length overall:	295 m
Breadth moulded:	36,2 m
Draft:	8 m
Speed:	22,0 knots
Propulsion: Diesel electric,	
– Two shafts with fixed pitch propellers,	
– Three bow thrusters,	
– Two stern thrusters	
Passenger cabins:	1250
Passengers:	2790
Crew:	1030

INTERCAD IS SUPPLYING

- Supply of 3D equipment models

MEIN SCHIFF 6

PASSANGER CRUISE VESSEL



MAIN CHARACTERISTICS

Length overall:	295 m
Breadth moulded:	42 m
Draft:	8 m
Speed:	22,0 knots
Propulsion: Diesel electric,	
– Two shafts with fixed pitch propellers,	
– Three bow thrusters,	
– Two stern thrusters	
Passenger cabins:	1250
Passengers:	2534
Crew:	1030

INTERCAD IS SUPPLYING

- Supply of 3D equipment models

ROTRA VENTE

HEAVY CARGO DECK CARRIER



MAIN CHARACTERISTICS

Length overall:	141 m
Rule length:	132,2 m
Breadth moulded:	20.60 m
Depth main deck:	9.5 m
Draught max.	7.2 m
Airdraught:	35 m
Corresponding Deadweight approx.	6500 t

Flag: Dutch

Permissible loads: Roll-on / Roll-off

INTERCAD IS SUPPLYING

- Bow visor prototype concept feasibility study
- Scantling rule check
- Finite element analysis of the aftship
- Finite element analysis of the foreship incl. bow visor
- Basic design for class approval
- Detail design and work preparation

COSTA SMERALDA

PASSANGER CRUISE VESSEL



MAIN CHARACTERISTICS

Length overall:	337,0 m
Breadth moulded:	42,0 m
Draught:	8,8 m
Speed:	22,0 knots
Deadweight:	12500 t
Propulsion: Diesel electric,	
– Two shafts with fixed pitch propellers,	
– Three bow thrusters,	
– Two stern thrusters	
Passenger cabins:	2610
Passengers:	6522
Crew:	1678

INTERCAD IS SUPPLYING

- Modeling of machinery piping systems for passanger cabin areas.
- Creation of coordination drawings
- Creation of isometrics
- Supply of all 3D equipment model

COSTA TOSCANA

PASSANGER CRUISE VESSEL



MAIN CHARACTERISTICS

Length overall:	337,0 m
Breadth moulded:	42,0 m
Draught:	8,8 m
Speed:	23,0 knots
Deadweight:	12500 t
Propulsion: Diesel electric,	
– Two shafts with fixed pitch propellers,	
– Three bow thrusters,	
– Two stern thrusters	
Passenger cabins:	2610
Passengers:	6322
Crew:	1646

INTERCAD IS SUPPLYING

- Modeling of machinery piping systems for passanger cabin areas.
- Creation of coordination drawings
- Creation of isometrics
- Supply of all 3D equipment model

www.INTERCADGROUP.com



INTERCAD HOLLAND B.V.
Ambachtweg 51a/b
2841 MB Moordrecht
The Netherlands
Phone: +31 182 605 564

INTERCAD, s.r.o.
Eötvösa 3
94501 Komárno
Slovakia
Phone: +421 35 285 22 22