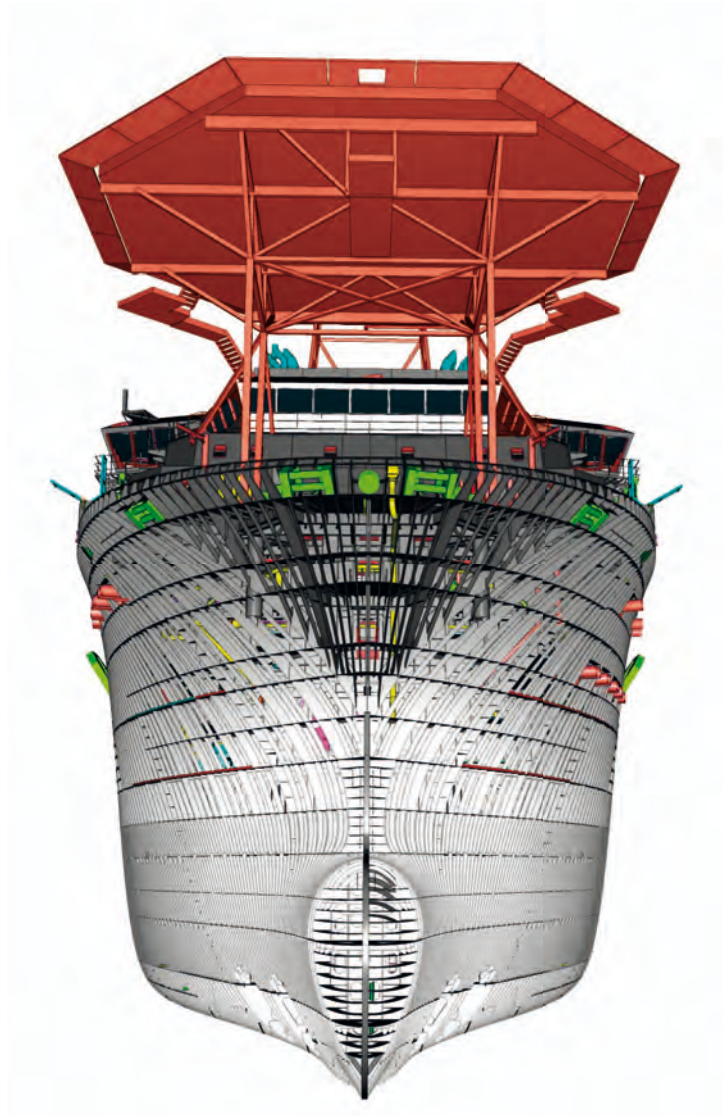
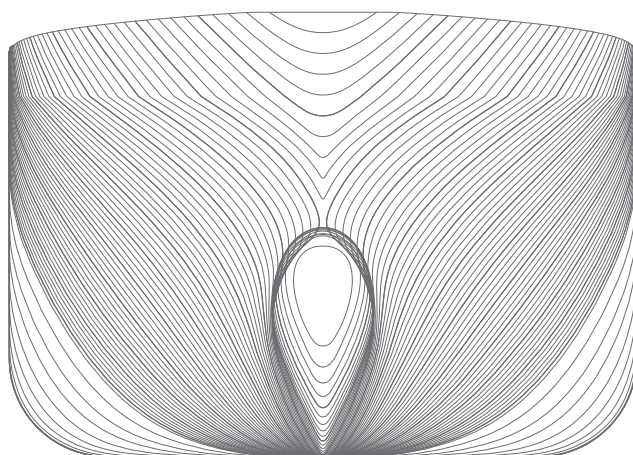




iINTERCAD
SHIP DESIGN & ENGINEERING





"Any solid lighter than a fluid will, be so far immersed that the weight of the solid will be equal to the weight of the fluid displacer."

Archimedes

CONTENTS

Welcome	5
Story to tell	7
We like a technical challenge	8
Our clients	9
Concept design	10
Basic design	11
Detail Engineering	12
Hull construction	13
Machinery & Piping	13
Interior design	13
Atilla, River Cruise Vessel	14
Concept Design, Atilla	17
Projects	18
Tools	19



Welcome!

Welcome to Intercad, your reliable partner in the world of ship design and engineering.

Intercad offers a wide range of engineering services towards many established shipyards and vessel owners around the globe. Our organization provides a full range of services starting from the translation of the first ideas on the back of a business card towards the development of a fully operational vessel at high seas.

We make sure to keep ourselves informed about changing rules and regulations ensuring that our work is handled in compliance with environmental and safety regulations.

Knowledge of ship theory and ship building practices are key-factors in this versatile industry therefore we invest in our people keeping them up to date with the latest innovations in ship design and engineering.

With our branch office located close to Rotterdam, we extended our organization in such a way that projects are managed closely by our clients allowing to keep control and input throughout the design and engineering process of their vessel.

Working in close cooperation with ship owners and ship yards and participating in the realization of visions and ideas into a state of the art vessel is what drives us every day.

We warmly welcome you to challenge us with your technical questions and ideas.

Kind regards,

Roland Matusek
CEO Intercad Group







Story to tell

In 1898 the Austro-Hungarian shipping company realized it's need for a shipyard in Komarno, Slovakia. The shipyard built and designed more than 1800 ships over time and became the largest shipyard in central Europe. On the banks of the Danube corridor and near large developing cities, Komarno was the natural and obvious choice for Intercad and still is to this very day.

Intercad established her business in the year 2000 as a family-based company dealing with all aspects of ship design and engineering. Over the years we expanded our company to well over 40 employees and in 2013 we opened a new office near Rotterdam: Intercad Holland BV, to improve our services the shipbuilding industry in western Europe. We warmly invite you to visit our main office in Komarno or our Dutch office in Moordrecht to witness the company's activities, to discuss future projects or just for a good cup of coffee.

We like a technical challenge

Recently our client Concordia group commissioned and delivered two particularly innovative vessels, the Rotra Vente and Rotra Mare. These heavy cargo ro/ro vessels with an opening bow section, are specifically designed for the efficient transportation of wind turbine parts such as monopiles, blades and nacelles. For the charterer of the vessel, the ro/ro system leads to a more cost and time effective operation during the loading and unloading process. In close cooperation with Concordia Intercad realized the complete basic design package for class approval including strength calculations and the delivery of all needed production information.

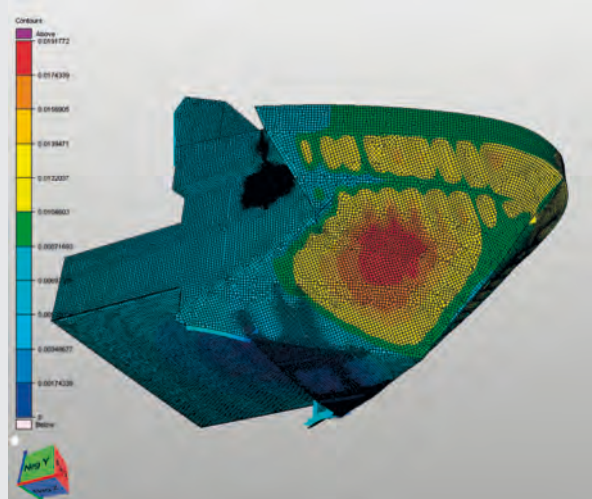
By choosing a rigorous conversion, Concordia applied a diversification to get overcapacity out of the container market and to give these vessels a new purpose. In addition to the characteristic bow visor and ramp, both vessels are equipped with an extreme heavy cargo deck and with a fully autonomous ballasting installation. Propulsion system and rudders were specially modified to meet the highest performance criteria and to achieve maximum fuel efficiency.

Over the past few years, both vessels have been operating in the North Sea area to full satisfaction.



Our clients

Over the past decades, Intercad served many different parties connected to the ship building industry. Working with well-known shipyards and shipowners, we created innovative and sustainable cargo vessels, cruise vessels, offshore vessels and superyachts. In the intricate and fastmoving market of ship-building we serve our valuable clients with our knowledge of rules and regulations and green developments.



Concept & Basic Design

CONCEPT DESIGN

In this dynamic phase we support our clients with translating their thoughts and ideas in to a realistic Concept Design fit for its purpose.

Together with the practical user experiences from our clients and expertise of our naval architects and engineers we come to a high sustainable concept design.

When the concept design is completed we have created a full tender package that can be used for request for quotation towards shipyards.

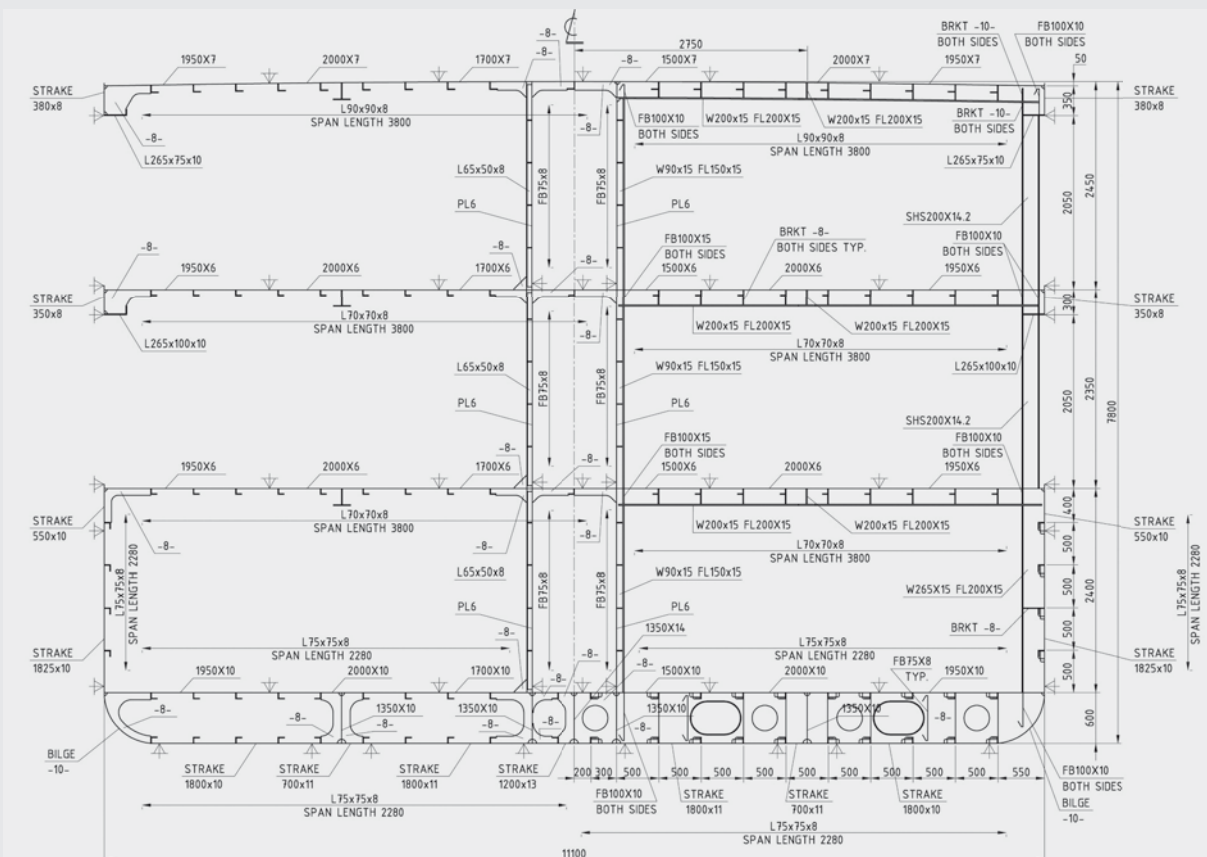


BASIC DESIGN

Further developing the concept design towards a basic design results in an engineering package that can be offered towards the concerning class society for approval.

In this phase our engineers will already develop a 3D model from where class information can be extracted allowing us to have a head start with the detailed design phase.

An E-browser application can be provided for the convenience of our clients allowing them to follow the progress in the 3D model on daily basis.



Detail Engineering

This is the backbone of our organization, all experience, knowledge and best practice are implemented in our system. Like no other we realize that the quality of detail engineering is an important factor in the shipyard's ability to build vessels efficient, cost-effective and fast.

Working in close contact with our clients ensures easy alterations, build-friendly solutions and top-quality engineering in line with shipyard norms and standards throughout the whole process.

Also in the detail design phase the E-browser application can be provided to clients to keep track on the progress of the detailed 3D model.



HULL CONSTRUCTION

Building vessels as efficient as possible is a challenge to any shipyard.

As your engineering partner, Intercad offers on-site support allowing to keep close contact with production smoothening the build throughout and to maintain quality norms and standard at all times. This can be vital during the critical stages of vessel construction, our engineers are well trained and experienced in working closely together with shipyards and owners under any circumstances, anywhere.

MACHINERY & PIPING

Piping and machinery is a separate discipline in ship engineering, however it is closely connected to the overall ship design process. At Intercad, the 3D model is created in "real time" so that the machinery and outfitting departments are always working with the latest information concerning the model. This method ensures that we are working to the highest standards both cost effective and time efficient at all times and at every level.

INTERIOR DESIGN

Interior design is a creative, innovative and artistic process. Our engineers combine knowledge with aesthetic vision and creativity into extraordinary designs that will exceed the highest expectations. Whether it is a super-yachts interior or crew accommodation for a tugboat, Intercad creates practical, luxurious and elegant solutions to ensure a comfortable live on board.

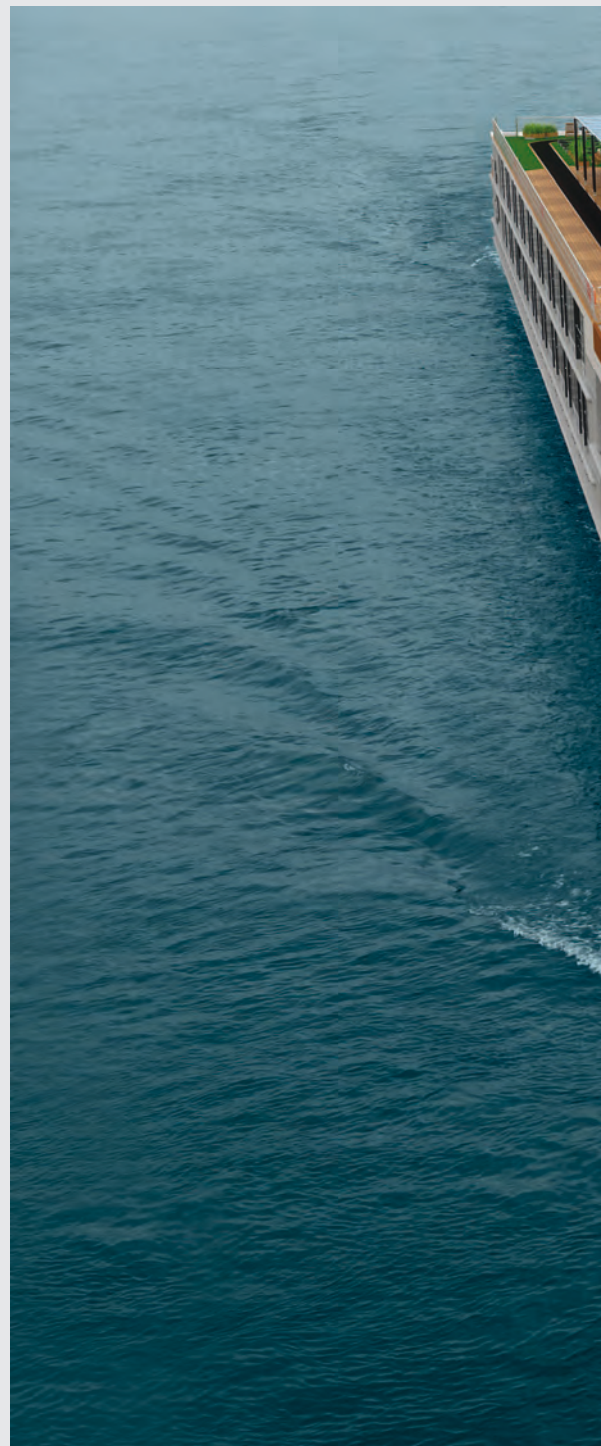


ATILLA

River Cruise Vessel

Recognizing the call for modern cruise ships, Intercad developed a highly sustainable and cost-efficient vessel that sets the new standard in comfortable cruising. Innovation and superior design are the bases of this revolutionary and modular concept that offers a completely new vision to the future market of tourism.

With just a few clicks, this concept may be altered to customers requirements to meet tomorrow's challenges in the cruise market. Using green ship technology like solar power and a ballast treatment system we have designed a fuel efficient and comfortable river cruiser that meets all CESNI requirements: Atilla. With diesel-electric technology and the latest in renewable and sustainable energy, Atilla is ready for the new way of travelling. With this low emission, cost effective river cruiser of superior comfort and maneuverability, Intercad has raised the bar in ship design and engineering.









Concept Design

Atilla

Apart from sustainability, Atilla emphasizes on quality and pure luxury. Guests will travel the grand rivers of Europe in comfort and style as this new concept sets an exceptionally high standard.

While reposing in elegant staterooms or luxurious suites with majestic French balconies, guests will enjoy spectacular views of the surrounding landscapes gliding by.

Delightful gourmet restaurants with floor to ceiling glass walls, a spacious spa, mini golf and a counter-current swimming pool are just a few of the comforts that may be enjoyed while staying on board.

With this intelligent concept Atilla guarantees the ultimate cruising experience for you and all your guests.

NAME	Atilla
YEAR	2019
LENGHT OVERAL	135 m
BEAM OVERAL	11.4 m
DRAUGHT (MOULDED)	1.8 m
MAIN ENGINES	2x app.1000kW
SPEED	10 knots
PASSENGERS	164
STATEROOMS	80
SUITES	2
NAVAL ARCHITECT	Intercad
EXTERIOR DESIGN	Intercad
INTERIOR DESIGN	Akvadrat

Projects

Mein Schiff 3 & 4

Cruiseships and yachts have a special place in our hearts. For Intercad, it is always a great pleasure to work on these luxury liners, they are a true challenge for our engineers. In good cooperation with Meyer Werft, Intercad completed all detail design for the AC rooms and the full scope of component modelling on "mein Schiff 3 & 4". Intercad and Meyer Werft have been 'teamed up' for many years and intend to continue this successful partnership.

Island Constructor

Working as a partner to Ulstein shipyards, Intercad took care of all basic design for classification, detail engineering and complete steel outfitting for "Island Constructor". This state of the art offshore construction vessel is well equipped with 2 permanently installed VROV's, moonpool, 140t crane and accommodation for 90 crew. With our experienced engineers on site in Norway, Intercad ensured a smooth DNV classification for this newbuild innovative vessel. "Island Constructor" works mainly in Norwegian waters, serving the oil and gas industry as a "DP-3" offshore construction vessel.

Atlantic Dawn

Atlantic Dawn was the first vessel of a series for Hartman shipping. Intercad supplied all basic design, detail engineering and pipe routing for this superior heavy lift vessel. With 2 x 150t crane, a flush cargodeck and an open top notation, this ship is ready to carry any cargo, anywhere.



Other projects see on: www.intercadgroup.com



Mein Schiff



Island Constructor



Atlantic Dawn

Tools



www.INTERCADGROUP.com



INTERCAD HOLLAND B.V.

Ambachtweg 51a/b
2841 MB Moordrecht
The Netherlands

Phone: +31 182 605 564

INTERCAD, s.r.o.

Eötvösa 3
94501 Komárno
Slovakia

Phone: +421 35 285 22 22